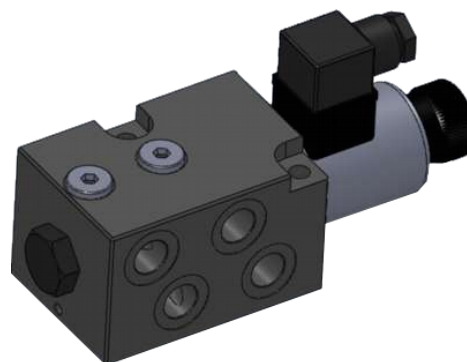


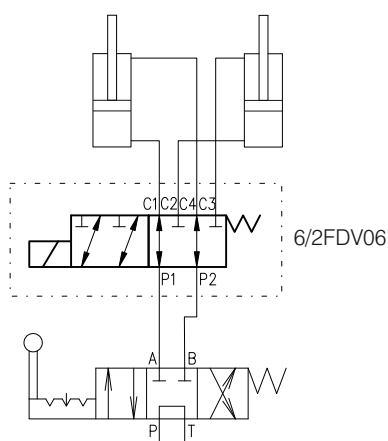
GENERAL DESCRIPTION

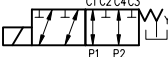

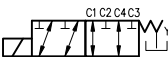

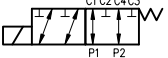

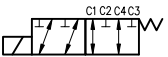

List: 62FDV06-1-Mar 2017

- ✓ 6/2- way flow diverter with solenoid operation
- ✓ Removable DC voltage coils-quick replacement and rotation in any direction without leakage from the system
- ✓ Wet pin core tubes
- ✓ Manual override option (push button)
- ✓ Maximum control of hydraulic power
- ✓ Reliability and long life



Connecting example



	Symbol	Intermediate	Drainage
11A			code "Y"- with drainage
12A			code "Y"- with drainage
11A			without drainage
12A			without drainage

The 6/2FDV06... valve is solenoid operated flow diverter valve. It is often used to control the direction of flow with two double acting cylinders as shown in the connecting example.

In case of problem with the electrical supply , an option for manual override is provided.

ORDERING CODE

6/2				FDV		06		...		1		-		.../...		F									
6-way , 2-position												External drainage:													
Flow diverter												omit - without drainage													
Nominal size - NG6												Y - with drainage													
Functional symbol:												Connection threads:													
11A												G38 - G3/8"													
12A												M18 - M18x1,5													
Type of control: -electrical												Climatic executions:													
Supply voltage/current frequency: 12V DC - 012/00												N - normal													
24V DC - 024/00												T - tropical													
Modification																									
Connectors:																									
												- without connector - C1													
												- standard connector - C2													
												- connector with light indicator - C3													

TECHNICAL DATA
GENERAL

DATA	UNIT	VALUE/RANGE
Installation position		optional
Max. ambient temperature	°C	-20...+50
Weight	kg	3,300

HYDRAULIC

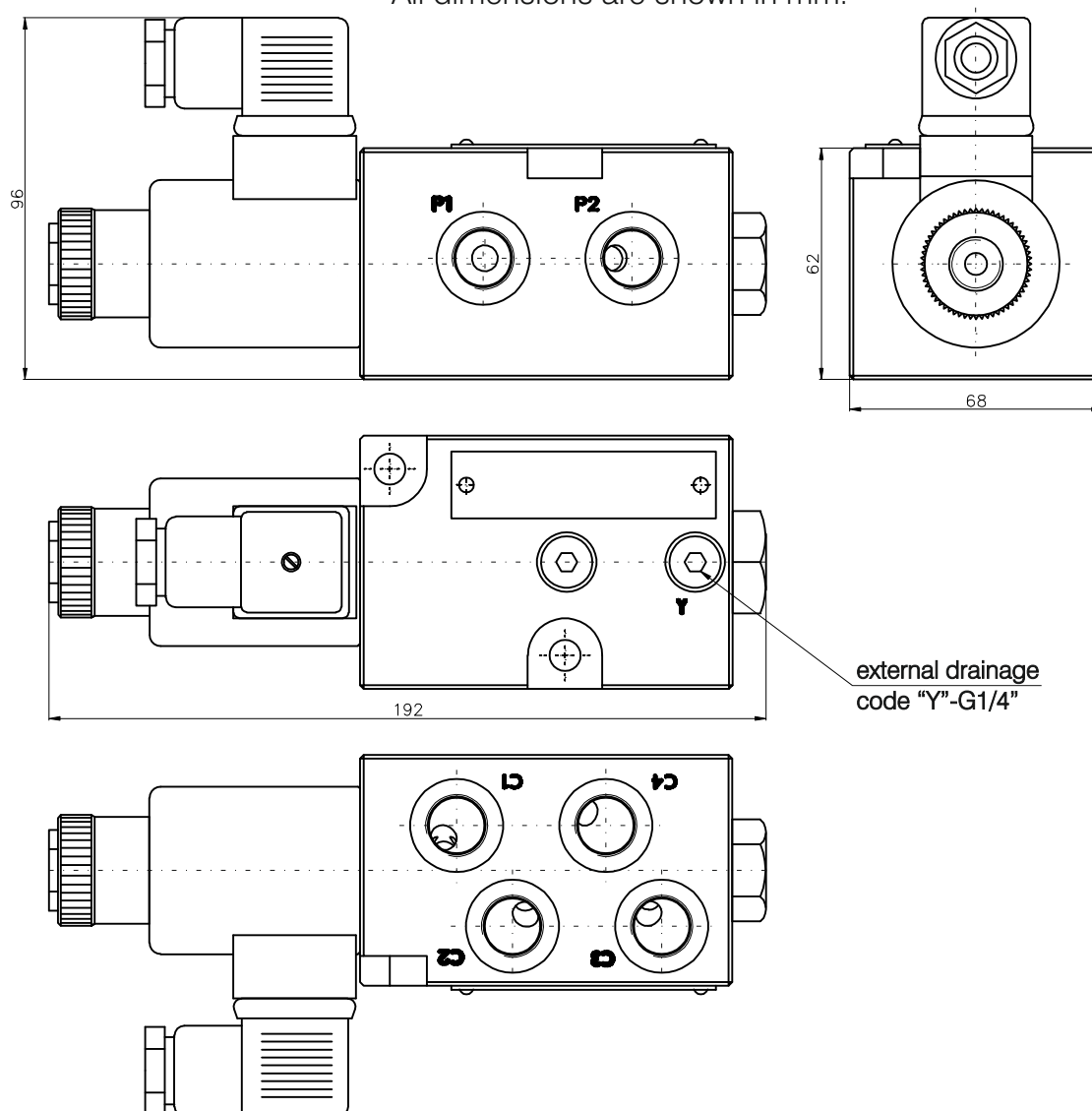
Max. pressure:	with drainage without drainage	MPa	31,5 21
Rated flow - see characteristics			
Hydraulic fluid-mineral oil: -viscosity -filtration degree -temperature	mm ² /s mm °C		10...800 0.025 -20...80

ELECTRICAL

Cyclic duration	%	100
Waterproof		IP65
Heat insulation		H
Type of voltage		DC
Available voltage /frequency	V/Hz	12/00 24/00
Voltage tolerance	%	± 10
Current consumption	12VDC 24VDC	A 3,1 1,6
Max. switching frequencies	cycle/h	10000

DIMENSIONS

All dimensions are shown in mm.



CHARACTERISTICS

p/Q

$\Delta p/Q$

curve 2 - P1 to C2 to C3 to P2 & P2 to C3 to C2 to P1
curve 1 - P1 to C1 to C4 to P2 & P2 to C4 to C1 to P1
32cSt oil at 50°C ; measured for valve without drainage

For all directions
32cSt oil at 50°C

